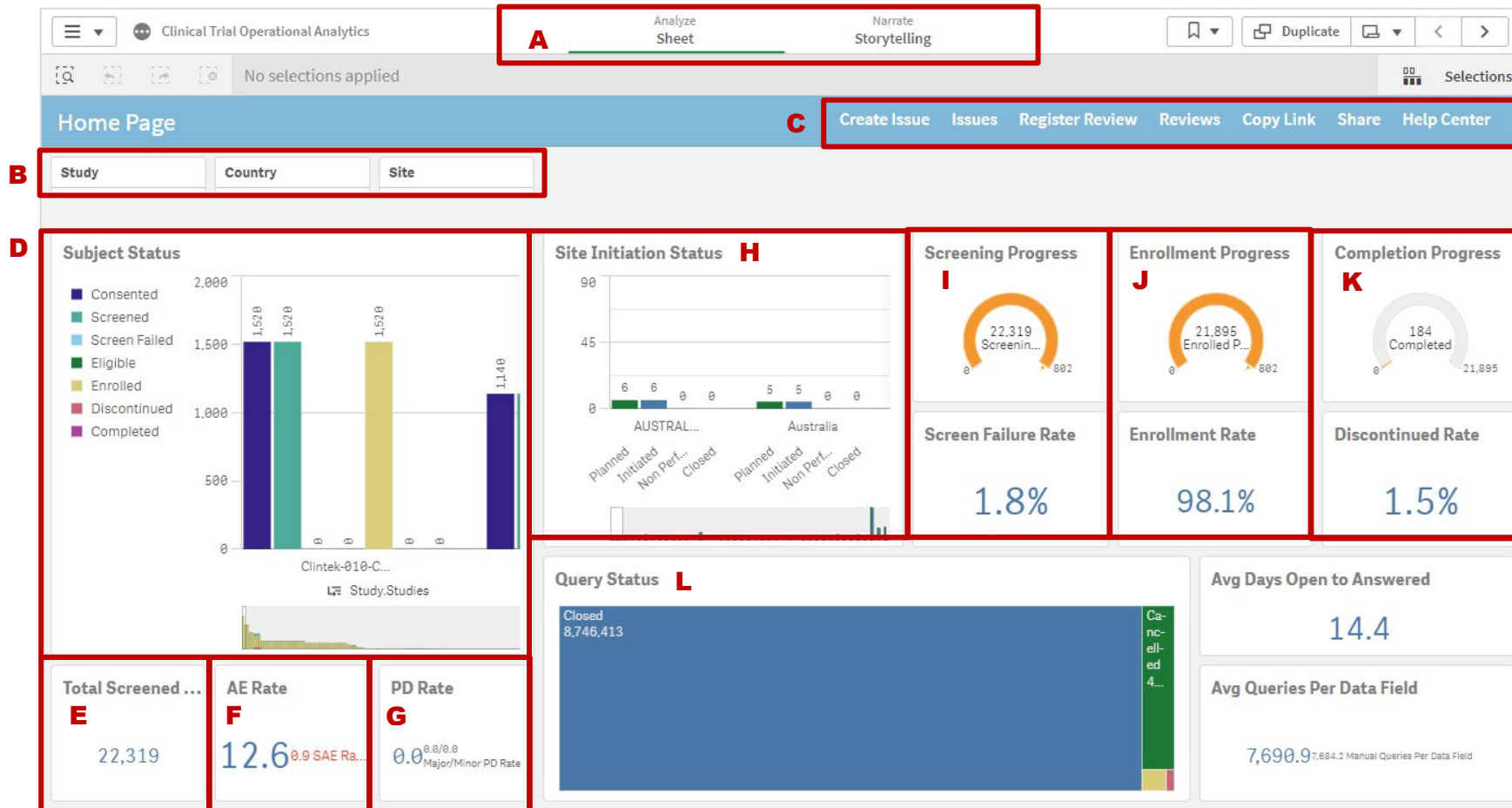


CTOA 22.3 Home Page Description Table



Note: Hover over any section of the Home Page to display icons such as the , or Show details, to see how the number was calculated, Take snapshot, Full screen, and Exploration menu.

	Items on Page	Description
A	Analyze Sheet / Narrate Storytelling	Analyze Sheet is selected as the default, indicated by the orange underline. Visualization sheets are available from Analyze Sheet. Click on Narrate Storytelling to create a story or access any published stories.
B	Available Filters	<p>Filters display across the top of the page to limit the results on the Home Page. If you navigate to another sheet the filters will apply until you remove them. Click in a filter field to display all available items and then make your selection. Click the green checkmark to confirm the selection. Data updates immediately.</p> <p>Filters available from the Home Page include: Study, Country, and Site.</p>
C	Action Buttons	<ul style="list-style-type: none"> • Create Issue: Click to create an issue on the sheet in view, preserving applied filters. • Issues: Click to open the global Issues listing. The listing has pre-programmed filters to show open issues assigned to the logged in user. • Register Review: Click to open a dialog window where your review of the sheet can be logged, and to schedule the next review. • Reviews: Click to access the Analytic Sheet Review Log Report. • Copy Link: Click to copy the link to the sheet in view, preserving applied filters. Paste in an email, chat, or document. Appropriate privileges are required to open the link and view the sheet. • Share: Click to open an email with a link to the sheet in view, preserving applied filters. Appropriate privileges are required to open and view the sheet. • Help Center: Click to access the Help Center.
D	Subject Status	The Subject Status bar graph displays subject status by study, country, or site providing key study numbers based on the subjects in the study. Statuses include consented, screened, screen failed, eligible, enrolled, discontinued, and completed. Hover over a bar to see a tooltip.
E	Total Screened Subjects KPI	The Total Screened Subjects KPI displays the number of screened subjects by study, site, country based on the filters applied.
F	AE Rate / SAE Rate KPI	The AE Rate KPI displays the percent of adverse events that were reported per subject in the large blue font, and the percent of SAEs that were reported per subject in the small red font.
G	PD Rate Major/Minor Rates KPI	<p>The PD Rate KPI displays the percent of protocol deviations that were reported in the large font and the percent of major and minor protocol deviations in the small gray font.</p> <ul style="list-style-type: none"> • PD Rate: the number of protocol deviations divided by the number of screened subjects. • Major PD Rate: The number of major PDs divided by the number of screened subjects. • Minor PD Rate: The number of minor PDs divided by the number of screened subjects.

	Items on Page	Description
H	Site Initiation Status	<p>The Site Initiation Status bar chart displays site status of Planned, Initiated, Non Performing, and Closed.</p> <ul style="list-style-type: none"> Planned: The count of planned sites if provided. Initiated: The count of active sites Non Performing: The count of active sites with no enrolled subjects Closed: The count of sites that are not active
I	Screening Progress / Screen Failure Rate	<p>Screening Progress:</p> <ul style="list-style-type: none"> The Screening Progress gauge displays the number of screened subjects compared to the number of planned enrollment. <p>Screen Failure Rate:</p> <ul style="list-style-type: none"> The Screen Failure Rate KPI displays the percent of screen failed subjects; the number of screen failed subjects divided by the number of screened subjects
J	Enrollment Progress / Rate	<p>Enrollment Progress:</p> <ul style="list-style-type: none"> The Enrollment Progress gauge displays the number of enrolled subjects compared to the number of planned enrollment, if planned enrollment has been provided. <p>Enrollment Rate:</p> <ul style="list-style-type: none"> The Enrollment Rate KPI displays the percent of enrolled subjects; the number of enrolled subjects divided by the number of screened subjects.
K	Completion Progress / Discontinued Rate	<p>Completion Progress:</p> <ul style="list-style-type: none"> The Completion Progress gauge displays the number of completed subjects compared to the number of enrolled subjects. <p>Discontinued Rate:</p> <ul style="list-style-type: none"> The Discontinued Rate KPI displays the percent of discontinued subjects; the number of enrolled subjects that were withdrawn divided by the total enrolled subjects.
L	Query Status	<ul style="list-style-type: none"> The Query Status TreeView chart displays the query status of answered, cancelled, closed and open. Hover over each tile to see a popup with details. Avg Days Open to Answered: The Avg Days Open to Answered KPI displays the average number of days it took from when a query was first opened until it was answered. Avg Queries per Data Field: The Avg Queries per Data Field KPI displays the average number of all queries per data field as the larger number and the average number of manual queries per data field displays as the smaller number. These numbers are calculated by taking the number of queries divided by the number of data fields.