

Audit Trail Review

Lisa Clough

May 01, 2025



Thank you for joining. We will be starting shortly.

Agenda

1

Introduction
Audit Trail
Review

2

Configuration of
the Audit Trail
Review

3

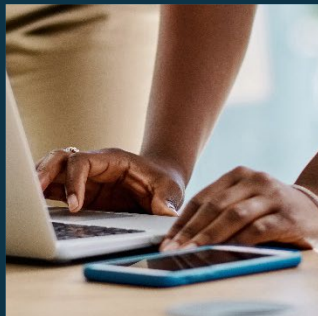
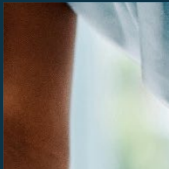
Review of the
Audit Trail
Review
Workspace

4

Questions



Introduction to Audit Trail Review



What is the Audit Trail Review?

The Audit Trail Review is a **workspace** used to review **site-level irregular data patterns** in the audit trail across multiple indicators such as irregular amounts of:

- Data deletions
- Data changes
- Data changes per domain
- Data changes per user
- Data changes after verification
- Data changes per month



The Audit Trail Review

Data Central | eCS-DS-001 | Data Central | Workspace Audit Trail Review

0001-001 | Subjects: 47 | Queries: 102 | Issues: 0 | Protocol Deviations | RBQM | eIQ Review | Visualizations | Data

Data Deletions

Normalized Deletions

Site ID	Number of Site ID records	Normalized Deletions
998	47	165
997	61	305

Relative Metrics (Data Deletions)

Lower Reference Point	5th Percentile	25th Percentile	Median	Mean	75th Percentile
0.7	2.99	15	46.85	86.54	122.45

Irregular Data Patterns: DataDeletions

Site ID	Number of Data Deletions	Number of Data Deletions (Norm...)
997	61	0.10
998	33	0.20

Irregular Data Patterns: DataDeletions...

Site ID	Domain	Number of Data Deletions
997	AE	1
997	CR	24
997	DM	3
997	MH	12
997	SUBJECT	13
997	SV	3
997	VS	5
998	VS	5
998	SV	2
998	SUBJECT	9
998	MH	12

Data Deletions | Data Changes | Data Changes per Month | Data Changes per User | Data Changes after Verify | Data Deletions per Month | Data Changes per User & Month | Changes after Verify per Month





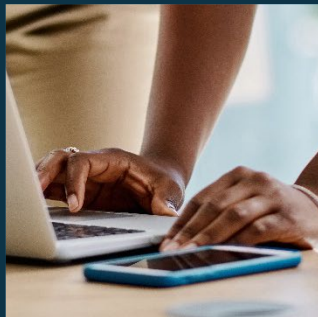
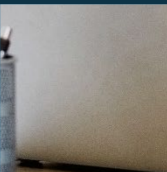
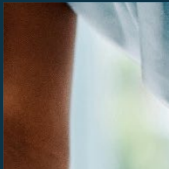
Configure the Audit Trail Review



How to Configure for Audit Trail Review Workspace

- Currently, must be a Rave study
- Requires ODM Mapped data
- Configured from:
 - Data Central Configuration > eIQ Review > Irregular Data Patterns (IRD)
- Must reimport the ODM data after enabling IRD
- Configure IDP within Data Central Configuration > Data Review
 - Both Subject ID and Site ID should be set to Site ID

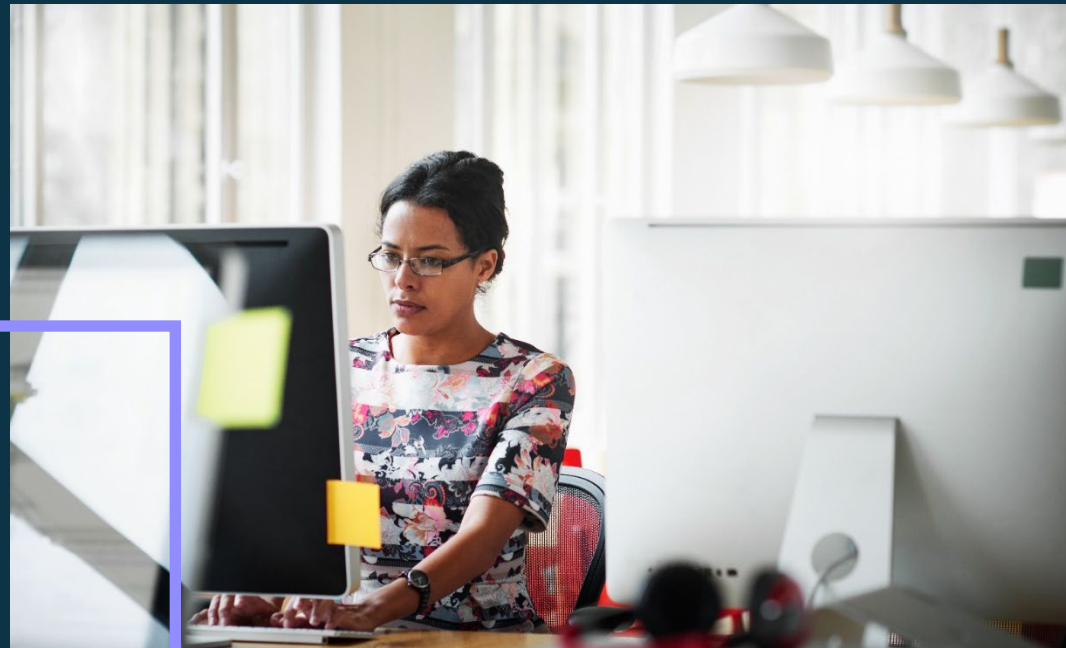




Review the Audit Trail Review Workspace



Let's jump in...





Thank you

